



respiratory therapy

BiWaze[®] Cough SYSTEM

BiWaze[®] Cough SYSTEM



INTELLIGENT



HYGIENIC



INTUITIVE

BiWaze Cough is the respiratory therapy system that combines multiple therapies of assisted cough and lung expansion along with high frequency oscillation, BiWaze Cough breaks up and then removes mucus from the lungs by applying positive air pressure (inhale) to the airway and then rapidly shifting to negative air pressure (exhale).


After exhale, the pause phase allows the user to rest before the next assisted cough cycle. BiWaze Cough can provide positive pressure flow during the pause phase, creating a higher mean airway pressure which keeps the Functional Residual Capacity higher post exhale and provides a more comfortable therapy for the patient.

BiWaze Cough is designed to provide cleaner care, easier implementation and, is a smarter solution.



one system, multi-therapy

Multitasking with every cycle, BiWaze Cough is intelligently built to use a combination of high frequency oscillation, lung expansion and assisted cough therapy to break up mucus and clear airways.



BiWaze Cough delivers an unmatched high frequency oscillation therapy option to thin and mobilize mucus in the airways.

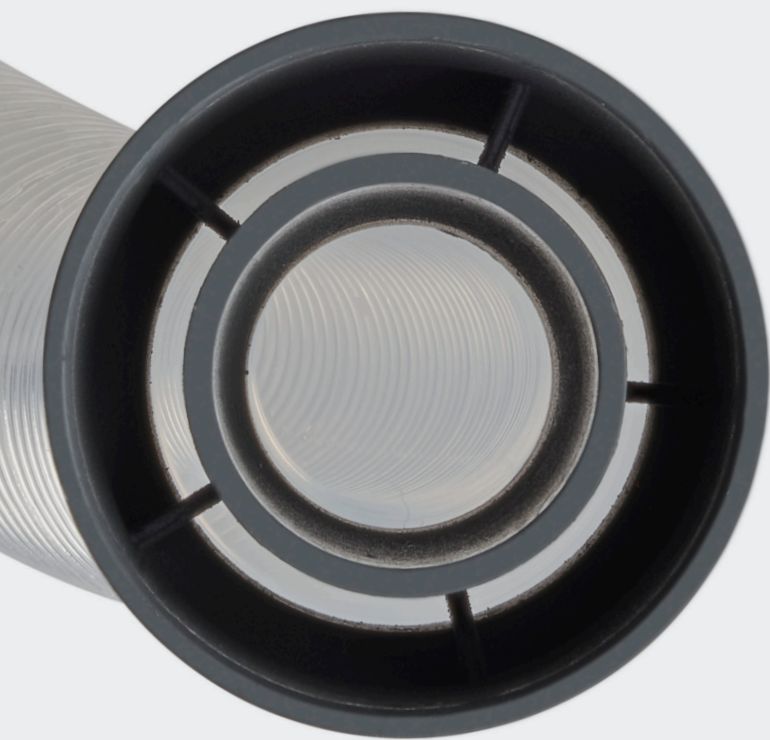
dual paths are better than one

BiWaze Cough provides a non-invasive solution to clear secretions from the upper airways. There are two blowers within the control unit which separates inhale and exhale air flow. The Dual Lumen Breathing Circuit is an alternative breathing circuit that extends the separation of air flow through a coaxial filter and coaxial breathing tube. The inhale pathway is through the outer tube and the exhale pathway is through the inner tube. The separation of air flow helps ensure the inhaled air is not contaminated with mucus and bacteria from the exhaled air.



redefining user friendliness

BiWaze Cough has a large 7" touchscreen with a simplified menu navigation and one-touch therapy selection of up to 10 stored profiles.



Cart (upper left), Patient Circuit Face Mask (upper right), Bacteria Filter (lower left), Convenient Carrying Case (lower right)



making caregiving more portable

BiWaze Cough is the smallest and lightest assisted cough device on the market. The and touch screen navigation make it a user friendly therapy.

The low profile design comes with a slim carrying bag for convenient portability. The carrying bag has ample room for a patient circuit. The light weight system (9 lbs) has a built in lithium ion battery which can deliver up to 2 hours of continuous therapy* on one battery charge.

*Based on a new battery being fully charged.



an inside line on better breathing

ABM Respiratory Care's mission is to advance the healthcare industry by developing intelligent, clinically differentiated and innovative respiratory care solutions to help people breathe better inside and outside the hospital.

SPECIFICATIONS

Operating Temperature	40 F to 95 F (5 C to 35 C)
Size	10.5 in L x 9.2 in W x 3.5 in H (27 cm L x 23.5 W x 9.0 cm H)
Weight	9.4 lbs (4.1 kg) – including internal battery
Presets	up to 10
Modes	Automatic and Manual
Maximum Positive Pressure	70 cm H ₂ O
Maximum Negative Pressure	-70 cm H ₂ O
Maximum Pause Pressure	15 cm H ₂ O
Inspiratory Time	0 – 5 seconds (auto mode only)
Expiratory Time	0 – 5 seconds (auto mode only)
Pause Time	0 – 5 seconds (auto mode only)
Inspiratory Flow	Low, Medium, High
Inspiratory Trigger Sensitivity	1 – 10
Amplitude	1 – 5
Oscillation Frequency	5 – 20 Hz



BiWaze® and BM Respiratory Care® are registered trademarks of ABMRC, LLC. The only warranty ABMRC, LLC makes is the express written warranty extended on the sale or rental of its products.

©2023 ABMRC, LLC. ALL RIGHTS RESERVED. PRTN-2037351818-22330 rev 3.0 MAY-2023 ENG US

For further information about this product or a service, visit our webpage:
www.abmrc.com or call customer support: 1-877-ABM-RC01 (877-226-7201)