

THE EASIEST WAY TO PREDICT THE FUTURE OF SLEEP DIAGNOSTICS IS TO INVENT IT

Intelligent Connect™

Automatic sensor & electrode recognition – making montages a thing of the past

Excellent signal quality

PSG System with up to 70 channels, 4 kHz sample rate with 24 bit resolution

HD touch screen

Allows PC independent set-up, bio-calibration & impedance check at the bedside



Small compact design

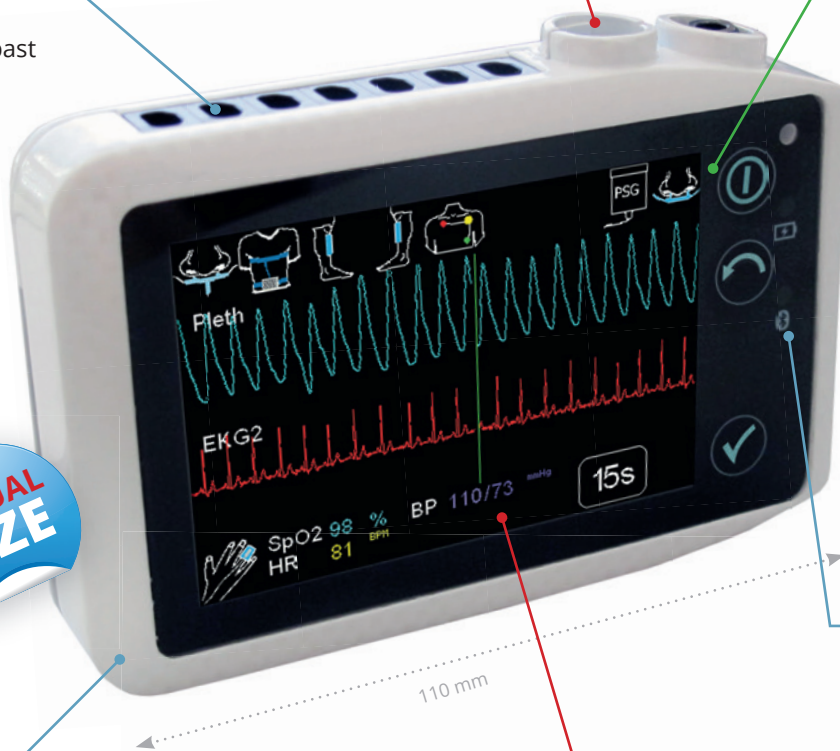
One device fits all, allowing ambulatory & stationary applications

Cuffless beat-to-beat blood pressure measurement

A new era in measuring blood pressure in a sleep laboratory – with no sleep disturbance

True wireless technology

Real-time wireless data transmission. Wireless sensors available for patient comfort and mobility



SOMNO HD™ - PSG Configuration



EEG

- ◆ Sleep: AASM or R&K standards
- ◆ Simplified Sleep: 2 options
- ◆ 32ch longterm EEG recording

Pediatrics

A full range of pediatric sensors is available and our DOMINO software has semi-automatic or manual pediatric analysis.

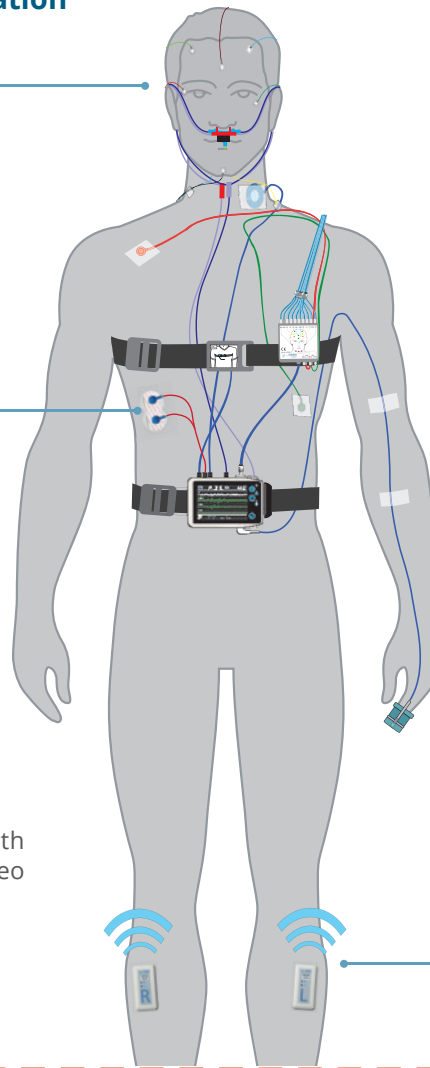
Obstructive or central apnea?

With IC EMG - you can now better distinguish between obstructive and central apneas.



IR video camera options

A full range of IR video cameras both home based and lab based online video options available. Contact us for further information.



Arousals

Arousal scoring based on the ability to pick up the reaction of the autonomous nerve system to awakenings in the plethysmogram.

PLMs

Both wireless & wired versions available.

SOMNO HD™ Signal and Sensor Options*

INTEGRATED	OPTIONAL SENSORS*				
Body position	SLEEP STAGING OPTIONS				
Movement	AASM Headbox - 17 EXG (10 x EEG/EOG, 3 x EMG, 1 x ECG)		Simplified Sleep Staging (Light, 2 x EEG, 2 x EOG)		
SpO ₂	SLEEP LAB SENSOR OPTIONS				
Pulse rate	Thermistor (flow)	Microphone (snore)	Second RIP belt	2 x PLM sensor	Bruxism
Plethysmogram	Extra EMG	Pneumotachograph	IC-EMG	Pediatric sensors	External body position
RIP belt	Activity sensor	Sidestream CO ₂	Transcutaneous CO ₂	1 or 3-channel ECG	
Pressure flow	EEG SYSTEM OPTIONS				
Snoring via pressure sensor	EEG Headbox - 32 ch (25 x EEG/EOG, 6 x EMG, 1 x ECG)			Photo stimulator	
CPAP pressure	ONLINE (IN-LAB) OPTIONS				
Patient marker	Bedside signal check		Wireless transfer to PC		Intercom
Ambient light	Infrared camera		Pan-Tilt-Zoom Camera (IR)		HD video (IR)
Intelligent power management	EXCLUSIVE TO SOMNOmedics				
	Cuffless beat-to-beat blood pressure measurement		Up to 6 EMG Wireless sensors (or 2 x PLMs)	Home Sleep Cam (offline video at home)	High freq. snoring
	SPECIAL OPTIONS				
	Connect external devices	CPAP integration			WE RESEARCH ONLY SENSORS AVAILABLE. Contact us for further information.

* Not all sensors and options are available in all countries. Please check with your local dealer for further information.